



e-shelf-labels

SMART.
DIGITAL.
EFFICIENT.

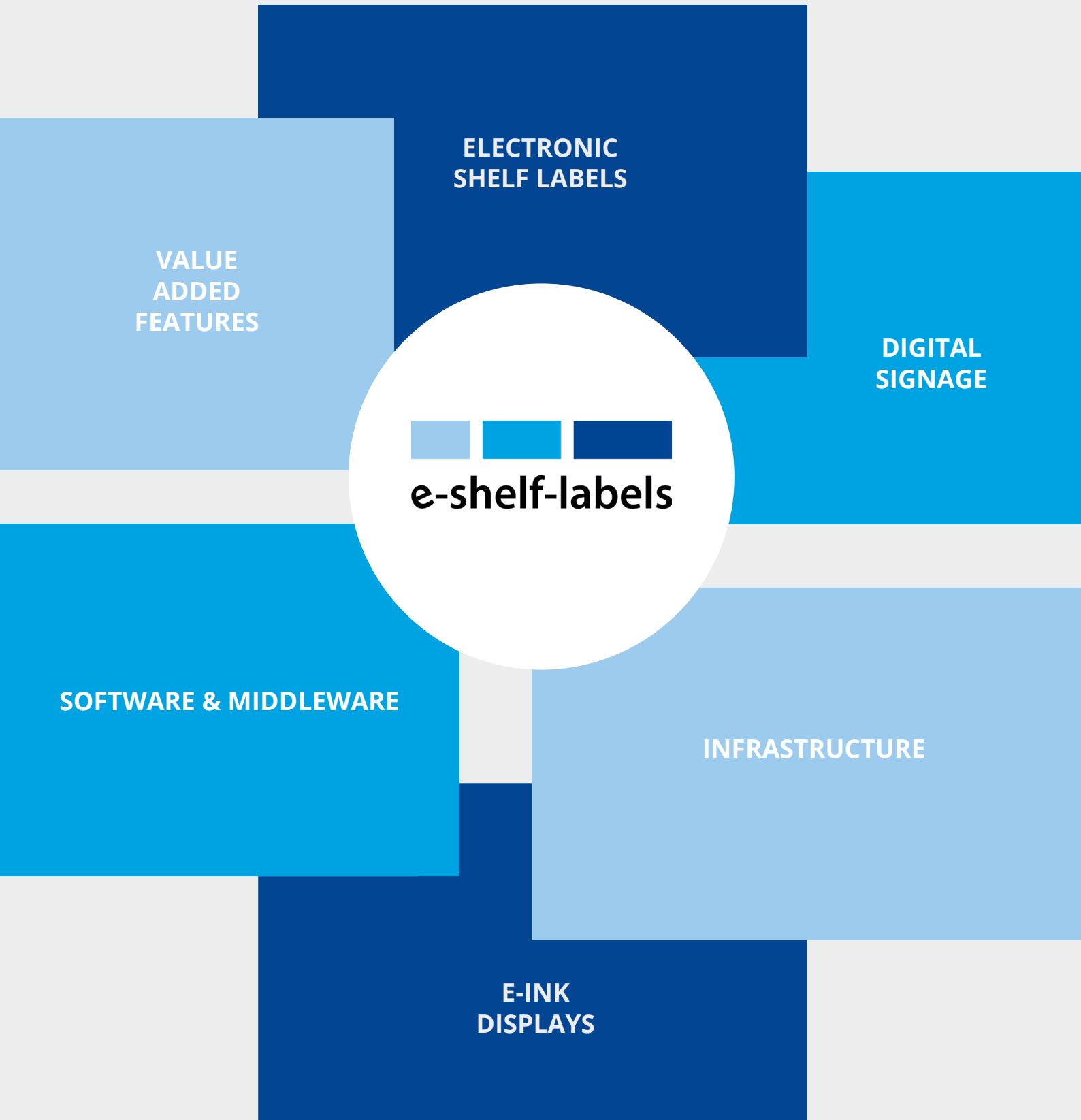
Product catalog

ESL SOLUTIONS



ESL solutions

from a single source



Foreward

e-shelf-labels

Your partner for electronic identification and labeling

Electronic identification and auto-ID play an enormous role in the digital transformation in retail as well as in gastronomy, tourism, industry and public spaces. With appropriate hardware components and software applications, companies across all industries can make their work processes more productive and effective in order to meet modern demands and rapidly growing competition.

e-shelf-labels has made it its mission to accompany and support companies on their way to digitization with the best possible ESL solutions. Our portfolio ranges from small electronic labels to large digital billboards. You will find an overview of our products and services in the catalog. Each hardware element is only a part of our overall solution and our customer service, which ranges from conception, through European and global implementation, to long-term support.

Choose e-shelf labels if you are looking for a partner who not only sells individual components, but also understands ESL systems as an overall concept of hardware, software and infrastructure.

Have we piqued your interest? Then contact us.

We are happy to help.

Have fun exploring.



Products

DISCOVER
OUR
PORTFOLIO!



1	Electronic Shelf Labels	06
2	Retail Solutions.....	10
3	Industrial Applications	12
4	Digital Signage.....	14
5	E-Ink Displays	16
6	Digital Room Signage	17
7	Infrastructure & Cloud	18
8	Software	20
9	Applications	22

Electronic Shelf Labels / Digital Price Tags

Price labeling with paper is a thing of the past. ESL solutions save money, time and resources and can do much more than just display prices. In modern retail, companies struggle to remain competitive, both against competitors in stationary retail and in e-commerce. This requires current and error-free prices as well as an increased attractiveness of products. Both are guaranteed by electronic price tags, which promise dynamic price labeling, diverse product information and interactive elements thanks to NFC technology. All these qualities also make them particularly attractive for use in manufacturing to optimize or even automate processes in inventory management or production. Robust, stable, energy-saving and always easy to read, they are the future of price and product labeling.

VUSION

The modular VUSION series based on e-paper can be individually designed in its layout and impresses above all with its easy installation, very good readability and up to 10 years of battery life. Special cooling labels are also available if required.

Advantages

- Up to 10 years of battery life
- 2,4 GHz (Cloud or on premise)
- Can be used from + 10°C to +40°C
- 180° viewing angle
- Available in white and anthracite
- 7 colors LED
- NFC



VUSION 1.6"

Size: 48 x 36.6 x 11.4 mm
Display: 152 x 162 pixel
NFC
7 colors LED



VUSION 2.2"

Size: 67.9 x 35.7 x 11.4 mm
Display: 212 x 104 pixel
NFC
7 colors LED



VUSION 2.6"

Size: 80 x 41.1 x 11.4 mm
Display: 296 x 152 pixel
NFC
7 colors LED



VUSION 4.2"

Size: 104.5 x 82.5 x 12.2 mm
Display: 400 x 300 pixel
NFC
7 colors LED



VUSION 4.5"

Size: 128.5 x 51.8 x 11.8 mm
Display: 480 x 176 pixel
NFC
7 colors LED



VUSION 7.4"

Größe: 175.3 x 123.4 x 13.2 mm
Display: 800 x 480 pixel
NFC
7 colors LED



VUSION 9.7"

Size: 227.6 x 169.5 x 13.5 mm
Display: 672 x 960 pixel
NFC
7 colors LED

VUSION 12.2"

Size: 218.3 x 265.8 x 7.4 mm
Display: 768 x 960 pixel
NFC



NEWTON

The multifunctional NEWTON labels with e-ink displays in BWR are also available as freezer models and as NEWTON Lite without buttons in selected sizes. Light and efficient, they are ideally suited for use in trade and industry.

Advantages

- up to 10 years of battery life
- 2 configurable multifunction buttons
- 2,4 GHz / 868 MHz (Cloud or on premise)
- IP67 and particularly shockproof
- 180° viewing angle
- Available in white and black
- 7 colors LED
- NFC



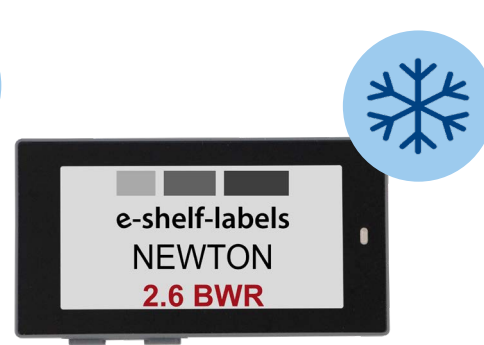
NEWTON 1.6"

Size: 36.7 x 45.0 x 13.1 mm
Display: 200 x 200 pixel
NFC
7 colors LED



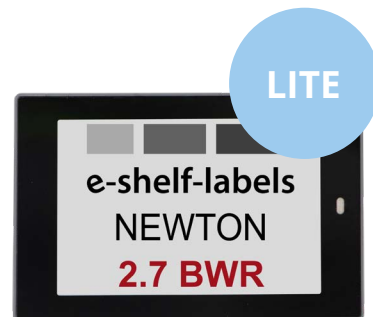
NEWTON 2.2"

Size: 67.1 x 37.4 x 13.1 mm
Display: 296 x 160 pixel
NFC
7 colors LED



NEWTON 2.6"

Size: 79.3 x 42.4 x 13.1 mm
Display: 360 x 184 pixel
NFC
7 colors LED



NEWTON 2.7"

Size: 76.0 x 49.5 x 13.1 mm
Display: 300 x 200 pixel
NFC
7 colors LED



NEWTON 2.9"

Size: 86.0 x 41.3 x 13.1 mm
Display: 384 x 168 pixel
NFC
7 colors LED

MARKED SIZES ALSO
AVAILABLE AS LITE OR
FREEZER MODELS



NEWTON 4.2"

Size: 98.1 x 83.8 x 14.5 mm
Display: 400 x 300 pixel
NFC
7 colors LED



NEWTON 6.0"

Size: 133.0 x 109.0 x 14.7 mm
Display: 600 x 448 pixel
NFC
7 colors LED



NEWTON 4.3"

Size: 130.3 x 42.4 x 13.9 mm
Display: 522 x 152 pixel
NFC
7 colors LED



NEWTON 7.5"

Size: 125.0 x 183.0 x 15.2 mm
Display: 800 x 480 pixel
NFC
7 colors LED



NEWTON 11.6 Zoll

Size: 192.0 x 268.0 x 21.9 mm
Display: 640 x 960 pixel
NFC
7 colors LED

Retail solutions

VIVID SHELF EDGE

The resource-saving LCD technology with touch function enables innovative and interactive product presentations. The label is mounted on power rails, which can be adapted to the viewing angle and customer requirements.

Advantages

- Dynamic product labeling
- Modern LCD display
- Interactive sales assistant
- Touch & Sensor
- Gesture control possible



Vivid Shelf Edge

Size: 98 x 64 x 10 mm
Display: 480 x 320 pixel
Wi-Fi
9-24V

VUSION Fashiontag

Size: 41.1 x 80 x 11.4 mm
Display: 152 x 296 pixel
NFC



FASHIONTAGS

Developed especially for the fashion and textile industry, fashiontags are attached directly to the goods, sometimes including security. Thanks to real-time pricing and an integrated NFC chip, they always show the latest information such as prices or available sizes.

Advantages

- Display of currently available goods
- Time savings for customer service
- NFC / smartphone connection
- Real-time-pricing
- Uniform pricing online and offline for competitiveness and flexibility

DIGITAL SHELF WOBLER

The specially animated e-paper displays can point out new products and discounts or convey advertising messages. The animation works through the interaction between the printed overlay and underlying segments, which are individually controlled.

Advantages

- Increased attractiveness & attention
- Strengthened sales promotion
- 180° viewing angle
- Very low power consumption
- Individually adaptable in color, shape & size
- Easy assembly & installation
- Out-of-the-box product



Digital Shelf Wobblers

Size & layout can be chosen individually

Peg Hook Label

Size: 97.8 x 28.8 x 5.95 mm
Display: 200 x 144 pixel
NFC
3 colors LED



PEG HOOK LABELS

Peg Hook Labels are minimalist electronic price tags especially for wholesalers, which have been developed for Euro hooks. They impress with their small size and are particularly suitable for use in areas in which many items are offered in a confined space.

Vorteile

- Real-time updates 8 times faster
- Battery life up to 5 years
- Location based services
- Individual branding possible
- NFC-enabled

Industrial applications

In addition to trade and tourism, many ESL solutions are specially designed for use in industry. These include, for example, electronic labels that promise easy scanning and thus more efficient work processes. At the same time, they can be equipped with various location technologies to enable faster commissioning processes or, in combination with SmartBins, to optimize inventory management. Digital IoT platforms, such as from PDi Digital, serve as the basis for all networked ESL processes in industry. With electronic labels, the connection to handhelds and existing ERP structures (SAP, MS Dynamics Navision, etc.) is always decisive in order to ensure smooth processes.

NEWTON SUBGIGA LABEL

The labels of the NEWTON series by SOLUM are a modern industrial solution that enables companies to make their internal logistics or supply chain processes more efficient and productive. They work on an 868 MHz frequency, which can be used as a technological preference or if the 2.4

GHz band is occupied by other applications. With the real-time control of the inventory via the e-shelf labels and simplified scanning options, optimized planning of work processes and an improvement in inventory tracking are guaranteed.

PICK-BY-LIGHT LABEL

Pick-by-light labels are particularly robust and have an enlarged button on the front with an integrated LED, making them particularly suitable for industrial applications. The button can be activated to display the position of the products on the shelf and to make it easier for employees to find parts. Additionally, various processes can be confirmed by pressing the button (e.g. pick / put by light). In addition to the large LED button on the front, the label has buttons on the side that can be flexibly programmed.



Newton Pick-By-Light Label 4.3"

Size: 130.3 x 42.4 x 13.9 mm
Display: 522 x 152 pixel
NFC

SMARTBIN FLEX / SMARTLABEL

SmartLabel in cooperation with SmartBins enable the automation of many processes in logistics management, such as reorders. The connection to software solutions such as ARIMS from PDi Digital and existing merchandise management systems is decisive.

SmartBins work fully automatically through weight sensors that are firmly attached to the containers. If a defined stock quantity is not reached, a restock process is automatically triggered. This saves companies time, reduces the error rate and constantly guarantees optimal inventory quantities.



AVAILABLE IN
2.9", 4.2", 7.5", 11.6"



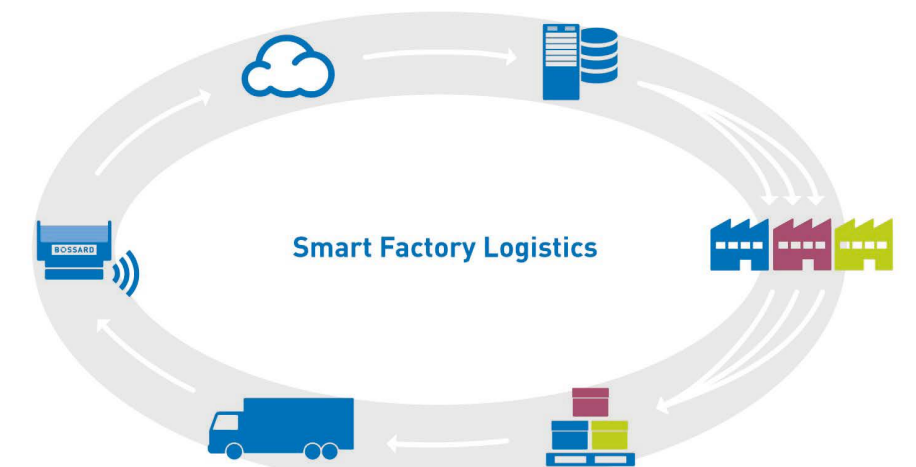
SmartBin Flex
Größe: 10 Zoll, 15 Zoll, 22 Zoll
Wi-Fi



SmartLabel

Automatic demand recognition

Seamless order management



Point of use replenishment

Consolidation and delivery

Digital Signage

VIDEO TOUCHBARS

Video rails enable modern, animated and full-color advertising and information options directly at the point of sale in the form of color images, videos, GIFs, QR codes, text advertising messages or detailed product information.

Advantages

- Dynamic product presentation
- Modern LCD display
- Full color
- Attractive product presentation with videos, images and GIFs

V:RAIL 12001

Size: 1215,4 x 72 x 29,47 mm
Display: 3840 x 160 pixel
Wi-Fi & Bluetooth



V:RAIL 09001

Size: 898 x 67,53 x 24,07 mm
Display: 2880 x 158 pixel
Wi-Fi & Bluetooth

V:RAIL 06001

Size: 603,2 x 67,5 x 34,6 mm
Display: 1920 x 158 pixel
Wi-Fi & Bluetooth

BENQ BH3801

Size: 949.6 x 317.6 x 45.6 mm
Display: 1920 x 614 pixel
USB / HDMI



BENQ BH2801

Size: 728.8 x 162.4 x 22.5 mm
Display: 1920 x 360 pixel
USB / HDMI

STRETCH DISPLAYS

Stretch displays, or so-called bar-type displays for 24/7 non-stop operation, are a good choice for advertising measures in complex shop environments or shop windows. The special thing is that stretch displays from BenQ are optimized for both portrait and landscape format.

Advantages

- Modern, dynamic advertising option
- Time savings for customer service
- Display of offers and promotions
- Vollfarbig

ELO TOUCH

The touchscreen monitors, including cloud-based management software, offer a wide range of possible uses, for example as a digital customer advisor in retail, as an information board or check-in service in the hotel or as a menu board and reservation platform in restaurants.

Advantages

- High storage capacity
- Multi-touch display
- Long life span
- NFC

elo Touch 15 Zoll

Size: 386,7 x 248,1 x 28,3 mm
Display: 1920 x 1080 pixel
NFC



elo Touch 10 Zoll

Size: 255.4 x 181.1 x 25.1 mm
Display: 1280 x 800 pixel
NFC

elo Touch 22 Zoll

Size: 323,9 x 523,9 x 35,2 mm
Display: 1920 x 1080 pixel
NFC

A-Frame 43"

Display: 1080 x 1920 pixel
Wi-Fi



DIGITAL ADVERTISING BOARD

The 43 inch full HD displays enable service and good visibility at all times. With a touch function for interactive search functions, the billboards also serve as a digital product advisor, guide or, in the case of hotels or restaurants, as a menu board or information board for guests.

Advantages

- Attractive advertising medium
- Interactive product advice
- Entrance control system
- Indoor & outdoor solution available
- Intuitive content management system
- Ideal hardware for the interactive product advisor software AISS

E-Ink Displays

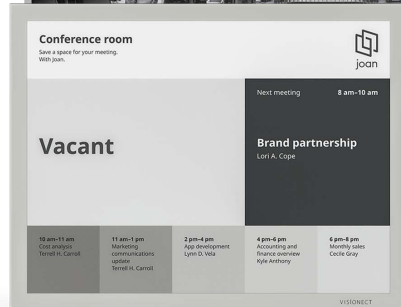
Displays based on e-paper technology are becoming more and more popular for labeling prices, rooms or public information, due to their qualities in comparison with print products or LCD panels. E-Ink displays always promise the best readability, even in bright light and poor reading angles, which is a huge advantage, especially in brightly lit rooms, high shelves or outside areas. Furthermore, they impress with their low power consumption. Since e-ink is "bistable", electricity is only consumed when the display changes. The displays remain in use for many months and can be operated with solar energy without any problems.

On request, we also offer special solutions for local public transport or special indoor and outdoor applications.



Visionect Place & Play 32"

Size: 707.2 x 413,8 x 13.4 mm
Display: 2560 x 1440 pixel
16 grayscale
Wi-Fi



Visionect Place & Play 13 Zoll

Size: 297 x 230 x 10.5 mm
Display: 1600 x 1200 pixel
16 grayscale
Wi-Fi

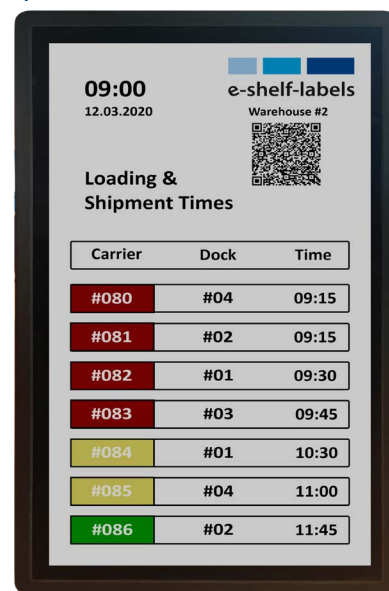


Visionect 6 Zoll

Size: 158.8 x 123.8 x 13.1 mm
Display: 1024 x 758 pixel
16 grayscale
Wi-Fi

Technoframe Full Color Display Outdoor

Size: 781 x 479.4 x 38 mm
Display: 1280 x 720 pixel
4096 colors
Wi-Fi



Digital Room Signage

Many people are familiar with digital door signs from modern offices, but they are also used in hotels, trade fairs, conference buildings or in the healthcare sector. Allocations, appointments or changes can be accepted and displayed within a very short time so that employees and guests are always up to date. The advantages of digital signs are not only in their central administration, but also in the e-paper technology. This always guarantees a high-quality display of graphics and texts as well as optimal readability with very low power consumption. This makes digital door signs a time and cost-saving alternative to classic paper signs with a sustainable character.



ROOMZ

Size: 196 x 165 x 7 mm
Display: 1024 x 768 pixel
Wi-Fi

ROOMZ

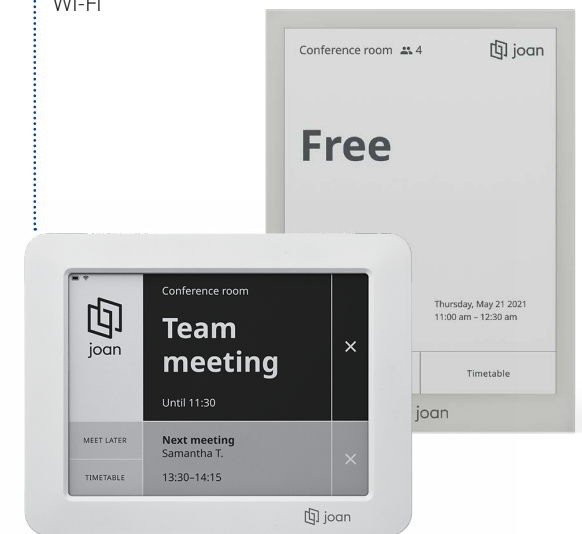
ROOMZ represents a modern look, practical administration and connection to internal calendar systems. The special feature is the possible use of sensors. These check whether meetings are actually taking place and automatically adjust the display.

JOAN

Joan stands for high-resolution graphics and text as well as long battery life. Both Joan 6 and Joan 6 Pro are played with Joan's room management system, which also includes the practical app for iOS and Android. It enables room bookings, changes and views of appointments on the go.

Joan 6 / Joan 6 Pro

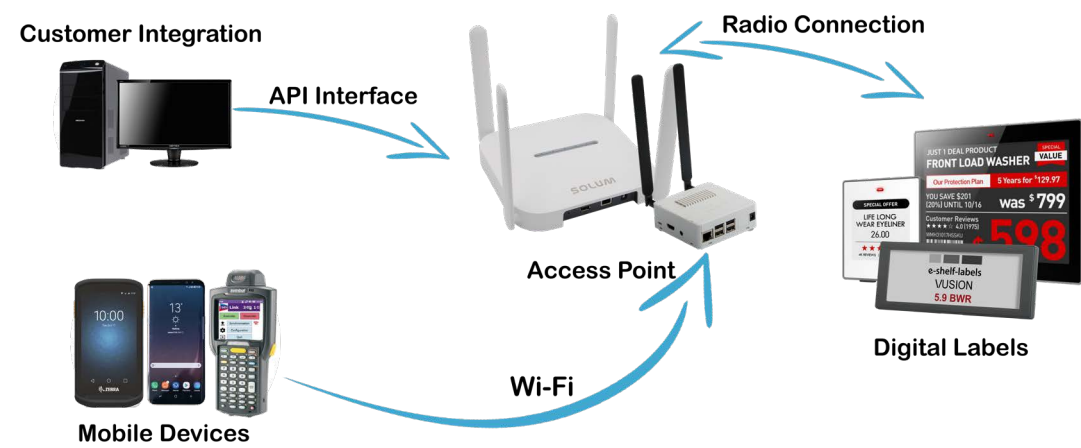
Size: 158.8 x 123.8 x 12 mm
Display: 1024 x 758 pixel
Wi-Fi



Infrastructure

In order to function optimally, every ESL and digital signage solution requires an appropriate infrastructure. This includes both software and hardware components that enable the exchange between the electronic signs and the customer connection, be it PC or handheld.

Our portfolio includes corresponding access points that act as a communication link between the individual elements. Data is exchanged with the digital labels via a radio link, while communication with mobile devices works via Wi-Fi or via an API interface on the PC.



ACCESS POINTS

A central element of the infrastructure is the access point, which acts as a central communication point between electronic price tags, desktop PCs and mobile devices. Most access points work in the 2.4 GHz range, as do the associated labels. For the 868 MHz frequency range commonly used in industry, we offer so-called Subgiga Access Points.



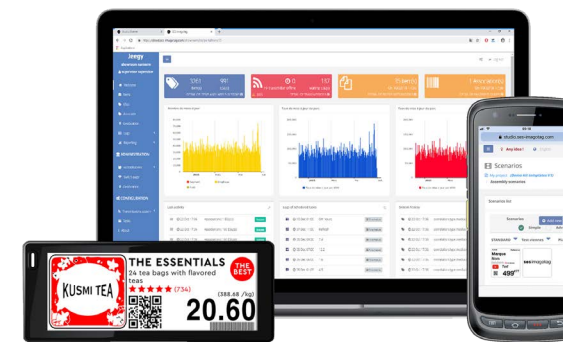
SOLUM Gateway
For NEWTON Label



SES-imagotag Access Point
For VUSION Label

Cloud Solutions

For an efficient omnichannel experience in stationary retail or flexible data collection in industry, we recommend our cloud solutions. With them, data can be securely recorded and linked regardless of location. Further advantages of cloud services are rapid scalability on a national and international level as well as low infrastructure costs. With our many years of experience in IT systems, we support companies in the implementation of cloud solutions with the highest level of data security.

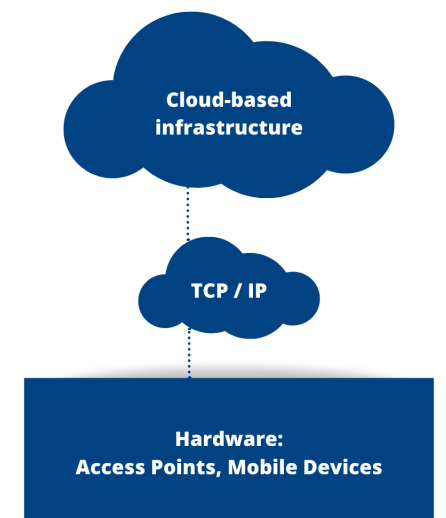


RETAIL

The use of cloud-based retail IoT platforms guarantees a flexible and powerful solution for data integration for digital labels, with management of different sources such as ERPs, e-commerce platforms or POS systems as well as an overview of store activities in real time.

MANUFACTURING

Work processes in Industry 4.0 require flexible and agile structures as well as monitoring of all interfaces in real time in order to identify problems in good time. Cloud-based IoT platforms enable real-time reports on the status of the infrastructure as well as location-independent management of the labels.

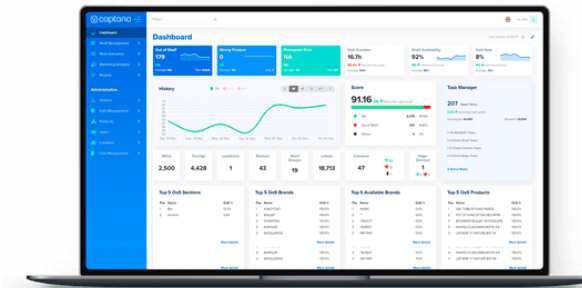
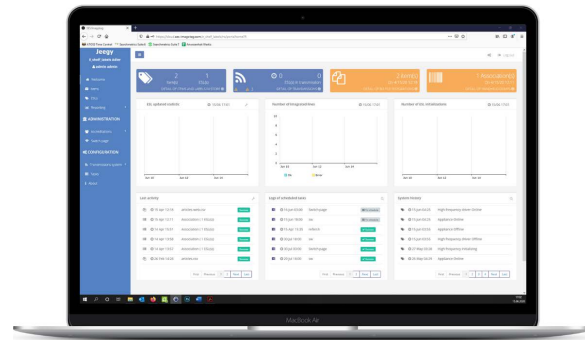


Software

Another important part of the ESL infrastructure is the software that is required for displaying on digital price tags and displays. For this purpose, we offer basic software solutions as part of the technical infrastructure, as well as software solutions for other networked processes such as mobile payment, automated shelf monitoring or interactive product advisory systems.

ESSENTIAL SOFTWARE - VUSION

Jeegy software is used for electronic price tags in the 2.4 GHz system. It can be used to generate templates, create interfaces or manage VUSION labels and check their functionality. In addition to on premise systems, the central management of the labels can also be carried out via the VUSION Cloud.

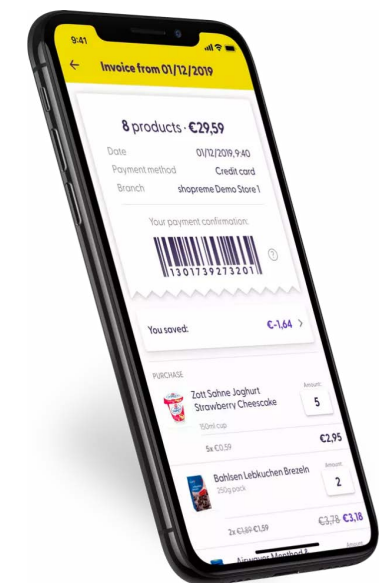


CAPTANA

With Captana, employees always have their shelves in view. This avoids out-of-stock situations and automates inventory management. A camera scans the shelves and sends information as soon as the stock falls below a predefined level. Automatic reorder processes are also possible with the system.

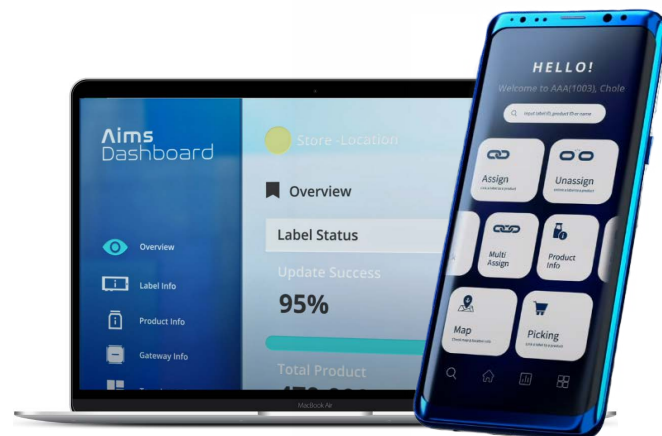
SCAN & GO WITH MOBILE PAYMENT

With Scan & Go, customers can not only conveniently scan their goods themselves, but also conveniently pay directly using Mobile Pay solutions, regardless of where they are in the store. For Scan & Go, hardware components in the form of scanners are used as well as suitable mobile pay applications and connections to the merchandise management system.



ESSENTIAL SOFTWARE - NEWTON

AIMS is the basic software for NEWTON labels in the 2.4 GHz as well as in the 868 MHz frequency range. The Advanced Information Management System enables the management of labels, products, stocks, users and data in one program. This also includes an integrated label designer. AIMS is available both on-site and in the cloud or as a SaaS server. There is also a mobile application for on the go.



SMASS MIDDLEWARE

Complete software is not always necessary. A middleware solution can serve as a medium for communication between the digital signage and existing ERP or leading background systems. Our SmaSS middleware is divided into three areas of application.

Areas of application

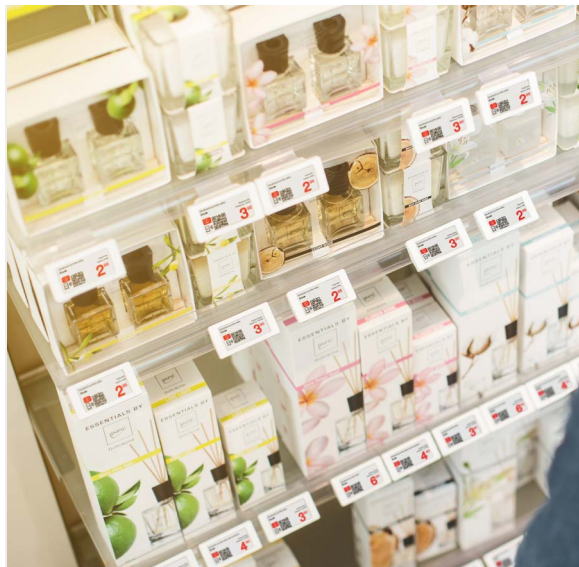
- SmaSS Logistik: For industrial use
- SmaSS Restaurant: For modern and dynamic menu and buffet labeling
- SmaSS Office: For flexible room management in offices and hotels

INTERACTIVE PRODUCT ADVISOR SOFTWARE

Interactive advice systems in stationary retail support employees and offer customers a simple and interactive shopping experience with product research or search on site. The hardware with touch function requires powerful and flexible software that contains all the options for product advice. AISS offers the possibility to create attractive layouts for and to manage the product advisor.



Applications



RETAIL

The digitization of work areas such as inventory management, product labeling, price adjustment or logistics saves time and money in the long term in retail. At the same time, ESL conserves resources by using less paper.



MANUFACTURING / LOGISTICS

Processes in industry and logistics must become faster and safer, while the volume of work increases at the same time. With ESL, entire work areas such as inventory management, picking, restock processes or last mile management are optimized or even automated.



HEALTHCARE

In healthcare facilities it is crucial to relieve the staff and to automate as many tasks as possible. With ESL, this concerns the room management, the direction through the building, the visitor information, as well as the medicine and device management in the warehouse.



ROOM MANAGEMENT

Flexible room labeling is extremely important for modern workplaces and concepts such as shared desk spaces. Digital displays connected to existing calendar systems show current occupancy in real time and can be quickly adjusted digitally via software or app as well as manually.



TOURISM & PUBLIC SPACES

Up-to-date, quickly visible and, above all, clear signage is crucial at airports, train stations, bus stops and public places. E-Ink displays are ideally suited for this, as they promise dynamic information with optimal readability. With a touch function, they can also be used in various languages as digital assistants in museums or offices.



HOTELS & GASTRONOMY

In hotels, ESL is used as an interactive information terminal, check-in assistant or, in the case of digital signage, to mark menus, events or tourist highlights for guests. In the catering industry, ESL not only enables the flexible labeling of menus or buffets, but also automated reservations.

AUTOMOTIVE INDUSTRY

Dynamic price labeling is particularly important in the automotive industries. In the case of used cars in particular, the constant competition with online platforms requires flexible and competitive pricing.



Eine Marke von



Smart. Digital. Efficient.

e-shelf-labels

S&K Solutions GmbH & Co. KG

 Sailerwöhr 16, 94032 Passau

 +49 851 200930-30


 +49 851 200930-22

 info@sk-solutions.com | info@e-shelf-labels.com

 www.sk-solutions.com | www.e-shelf-labels.de

e-shelf-labels Hungary

 Futó utca 35-37, 1082 Budapest

 +36 7061 58 001

 info@e-shelf-labels.hu

 www.e-shelf-labels.hu

